



# NTPase Polyclonal Antibody

<b>Catalog No</b>	YP-Ab-01921
<b>Isotype</b>	IgG
<b>Reactivity</b>	Human;Rat;Mouse;
<b>Applications</b>	WB;IHC;IF;ELISA
<b>Gene Name</b>	NTPCR
<b>Protein Name</b>	Cancer-related nucleoside-triphosphatase
<b>Immunogen</b>	The antiserum was produced against synthesized peptide derived from human C1orf57. AA range:141-190
<b>Specificity</b>	NTPase Polyclonal Antibody detects endogenous levels of NTPase protein.
<b>Formulation</b>	Liquid in PBS containing 50% glycerol, 0.5% BSA and 0.02% sodium azide.
<b>Source</b>	Polyclonal, Rabbit,IgG
<b>Purification</b>	The antibody was affinity-purified from rabbit antiserum by affinity-chromatography using epitope-specific immunogen.
<b>Dilution</b>	WB: 1/500 - 1/2000. IHC: 1/100 - 1/300. ELISA: 1/40000.. IF 1:50-200
<b>Concentration</b>	1 mg/ml
<b>Purity</b>	≥90%
<b>Storage Stability</b>	-20°C/1 year
<b>Synonyms</b>	NTPCR; C1orf57; Cancer-related nucleoside-triphosphatase; NTPase; Nucleoside triphosphate phosphohydrolase
<b>Observed Band</b>	21kD
<b>Cell Pathway</b>	membrane,extracellular exosome,
<b>Tissue Specificity</b>	Fetal brain,Skin,
<b>Function</b>	catalytic activity:NTP + H(2)O = NDP + phosphate.,function:Has nucleotide phosphatase activity towards ATP, GTP, CTP, TTP and UTP. Hydrolyzes nucleoside diphosphates with lower efficiency.,similarity:Belongs to the THEP1 NTPase family.,subunit:Monomer.,
<b>Background</b>	The protein encoded by this gene is a non-specific nucleoside triphosphatase that is slow-acting in vitro. This gene is overexpressed in many tumor tissues, and while it is not essential for the cell, overexpression is cytotoxic. However, the cytotoxicity is not related to its triphosphatase activity. [provided by RefSeq, Jul 2016],
<b>matters needing attention</b>	Avoid repeated freezing and thawing!



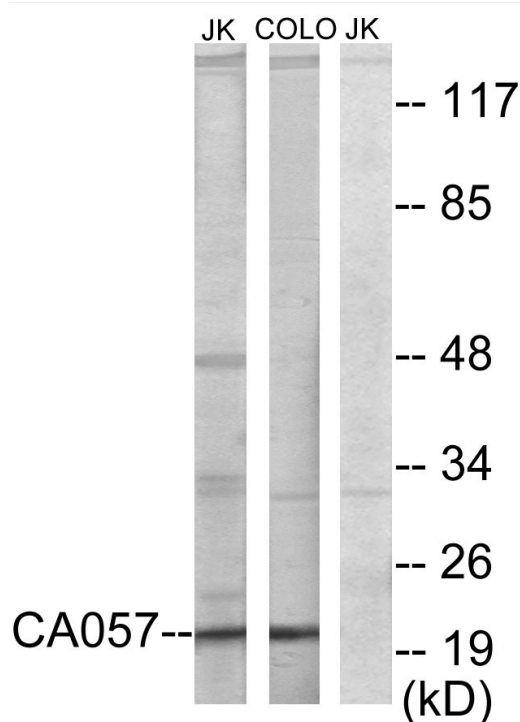
## Usage suggestions

This product can be used in immunological reaction related experiments. For more information, please consult technical personnel.

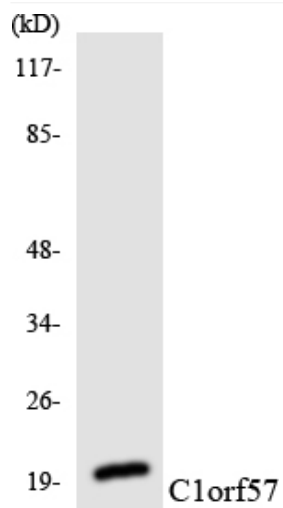
## Products Images



Western Blot analysis of various cells using NTPase Polyclonal Antibody



Western blot analysis of lysates from Jurkat and COLO205 cells, using C1orf57 Antibody. The lane on the right is blocked with the synthesized peptide.



Western blot analysis of the lysates from HUVECcells using C1orf57 antibody.